



## **Folk Foral Quilt 1**

Designed and made by Sally Ablett

Size of throw 66" x 66" - unfinished block size

12½" x 12½" size

## Requirements

Fabrics from the Folk Floral collection

1. A667.1 - Little flowers on cream - 5/8yd
2. A669.2 - Cross stitch hearts on coral - 5/8yd
3. A668.3 - Cross stitch on navy blue - 3/4yd
4. A666.2 - Folk floral damask on iced sage - 7/8yd
5. A670.1 - Folk floral all over on cream - 5/8yd
6. BB316 - Mustard - 1yd
7. BB111 - Indigo - 1 3/8yd

Wadding and backing 70" x 70"

All measurements include 1/4" seam allowances; press each seam as you go.

You will need to join your strips to get the length on the borders.

## Cutting

From fabric 1 cut

52 x 3 1/2" x 3 1/2" (block 1)

From fabric 2 cut

12 x 7 1/4" x 7 1/4" cut in half diagonally twice (block 2)

From fabric 3 cut

13 x 4 1/4" x 4 1/4" cut in half diagonally twice (block 1)

26 x 3 7/8" x 3 7/8" cut in half diagonally once (block 1)

13 x 3 1/2" x 3 1/2" (block 1)

From fabric 4 cut

12 x 6 1/2" x 6 1/2" (block 2)

48 x 3 1/2" x 3 1/2" (block 2)

From fabric 5 cut

52 x 3 1/2" x 3 1/2" (block 1)

From fabric 6 cut

6 x 1 1/2" x WOF inner border

52 x 3 7/8" x 3 7/8" cut in half diagonally once (block 1)

From fabric 7 cut

6 x 2 1/2" x WOF outer border

48 x 3 7/8" x 3 7/8" cut in half diagonally once (block 2)



First 3 rows

### Making up the block

Lay out the fabric piece for block 1 as in diagram. Stitch the center of block together in rows. Starting with a triangle each side of the square and then the small triangle to the top. Next row will have a small triangle each end with the squares in between. As row is the same as top row. Stitch the three rows together to form the center of the block. Sew a triangle to each side of the square as in the diagram. Stitch a triangle to the opposite side to the center, press and then stitch the last two triangles to complete the block. You need to sew 13 in total.

Place your fabric pieces as in block 2 diagram. Sew a small triangle to the short side of the larger triangle. Do this to all four pieces. Stitch in rows to complete the block. You need 12 blocks in total.

### Making up the quilt center.

Place the blocks as in the main diagram. Stitch in rows, pressing each row in the opposite way each time. This will help when you sew your rows together.

### Inner border

Join the fabric strip for each of the borders. 2 x 1½" x 60½" sides. Sew to each side of the quilt, press back. 2 x 1½" x 62½" top & bottom. Stitch to the quilt center, press

### Outer border

Join the fabric strip for each of the borders. 2 x 2½" x 62½" sides. Sew to each side of the quilt, press back. 2 x 2½" x 66½" top & bottom. Stitch to the quilt center, press

### Quilting

Sandwich the quilt top, wadding and backing together. Quilt by hand or machine as desired. Trim the backing and wadding to size of quilt.

### Binding

Use your favorite method from fabric 7 to bind the quilt.



Block 1



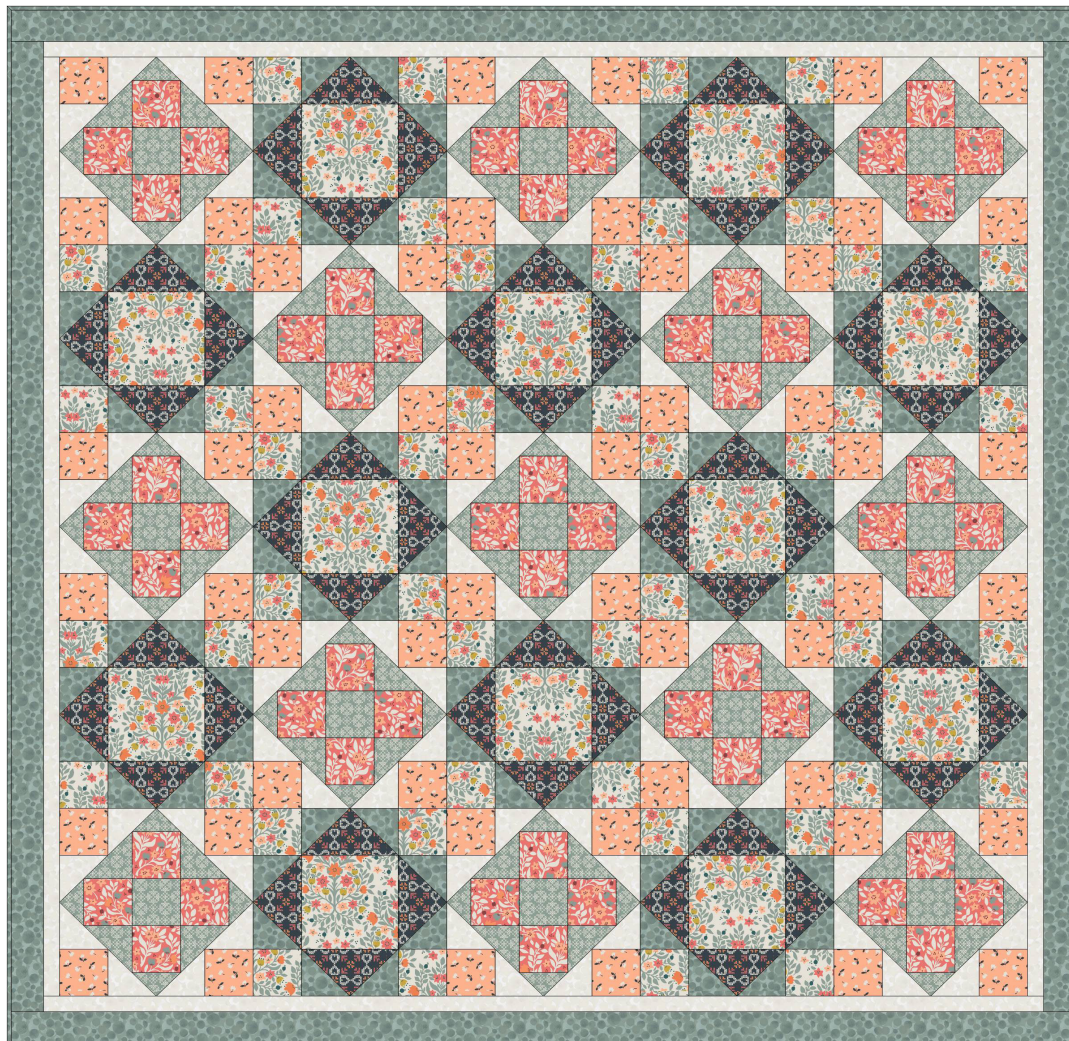
Block 1 layout



Block 2



Block 2 layout



## **Folk Foral Quilt 2**

Designed and made by Sally Ablett

Size of throw 66" x 66" - unfinished block size

12½" x 12½" size

## Requirements

Fabrics from the Folk Floral collection

1. A667.2 - Little flowers on peach - 5/8yd
2. A669.3 - Cross stitch hearts on navy blue 5/8yd
3. A668.2 - Cross stitch on iced sage - 3/4yd
4. A666.1 - Folk floral damask on cream - 7/8yd
5. A670.2 - Folk floral all over on coral - 5/8yd
6. BB40 - Cream - 1yd
7. BB317 - Iced sage - 1 3/8yd

Wadding and backing 70" x 70"

All measurements include 1/4" seam allowances; press each seam as you go.

you will need to join your strips to get the length on the borders.

## Cutting

From fabric 1 cut

52 x 3 1/2" x 3 1/2" (block 1)

From fabric 2 cut

12 x 7 1/4" x 7 1/4" cut in half diagonally twice (block 2)

From fabric 3 cut

13 x 4 1/4" x 4 1/4" cut in half diagonally twice (block 1)

26 x 3 7/8" x 3 7/8" cut in half diagonally once (block 1)

13 x 3 1/2" x 3 1/2" (block 1)

From fabric 4 cut

12 x 6 1/2" x 6 1/2" (block 2)

48 x 3 1/2" x 3 1/2" (block 2)

From fabric 5 cut

52 x 3 1/2" x 3 1/2" (block 1)

From fabric 6 cut

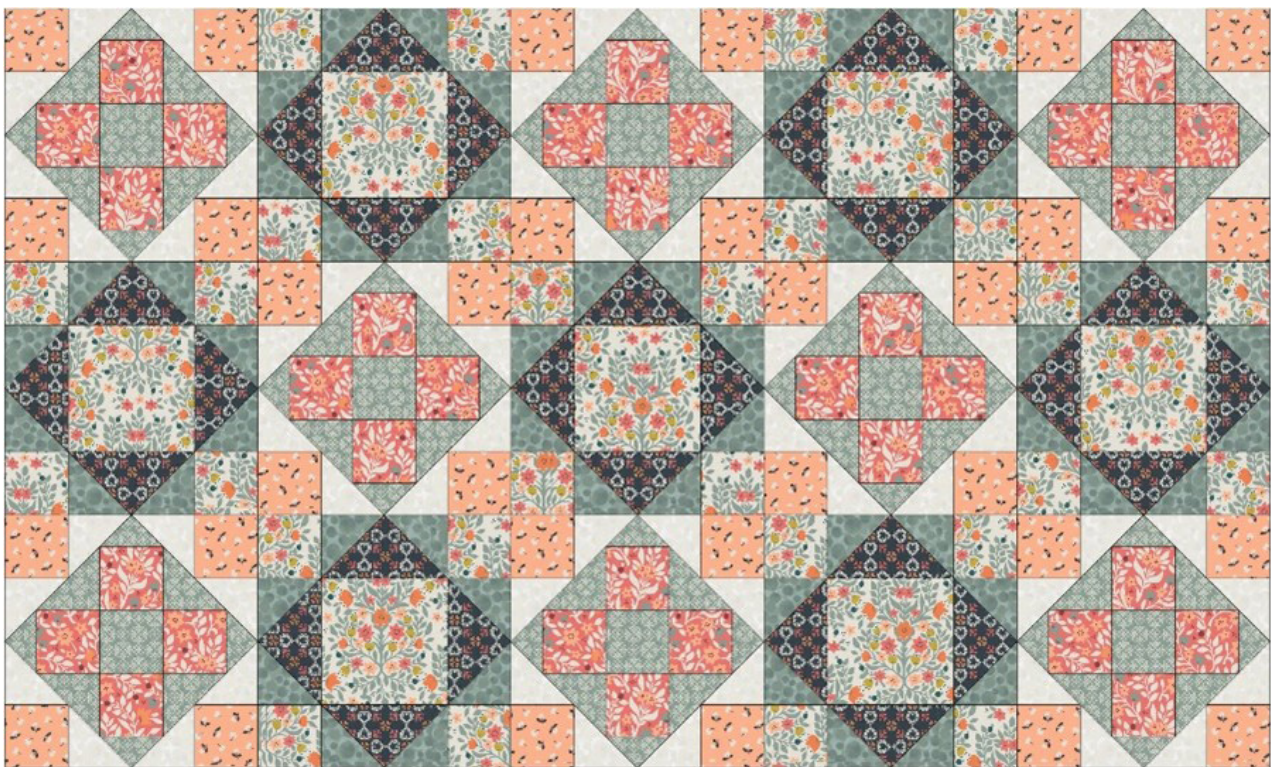
6 x 1 1/2" x WOF inner border

52 x 3 7/8" x 3 7/8" cut in half diagonally once (block 1)

From fabric 7 cut

6 x 2 1/2" x WOF outer border

48 x 3 7/8" x 3 7/8" cut in half diagonally once (block 2)



First 3 rows

### Making up the block

Lay out the fabric piece for block 1 as in diagram. Stitch the center of block together in rows. Starting with a triangle each side of the square and then the small triangle to the top. Next row will have a small triangle each end with the squares in between. As row is the same as top row. Stitch the three rows together to form the center of the block. Sew a triangle to each side of the square as in the diagram. Stitch a triangle to the opposite side to the center, press and then stitch the last two triangles to complete the block. You need to sew 13 in total.

Place your fabric pieces as in block 2 diagram. Sew a small triangle to the short side of the larger triangle. Do this to all four pieces. Stitch in rows to complete the block. You need 12 blocks in total.

### Making up the quilt center.

Place the blocks as in the main diagram. Stitch in rows, pressing each row in the opposite way each time. This will help when you sew your rows together.

### Inner border

Join the fabric strip for each of the borders. 2 x 1½" x 60½" sides.

Sew to each side of the quilt, press back. 2 x 1½" x 62½" top & bottom.

Stitch to the quilt center, press

### Outer border

Join the fabric strip for each of the borders. 2 x 2½" x 62½" sides. Sew to each side of the quilt, press back.

2 x 2½" x 66½" top & bottom. Stitch to the quilt center, press

### Quilting

Sandwich the quilt top, wadding and backing together.

Quilt by hand or machine as desired. Trim the backing and wadding to size of quilt.

### Binding

Use your favorite method from fabric 7 to bind the quilt.



Block 1



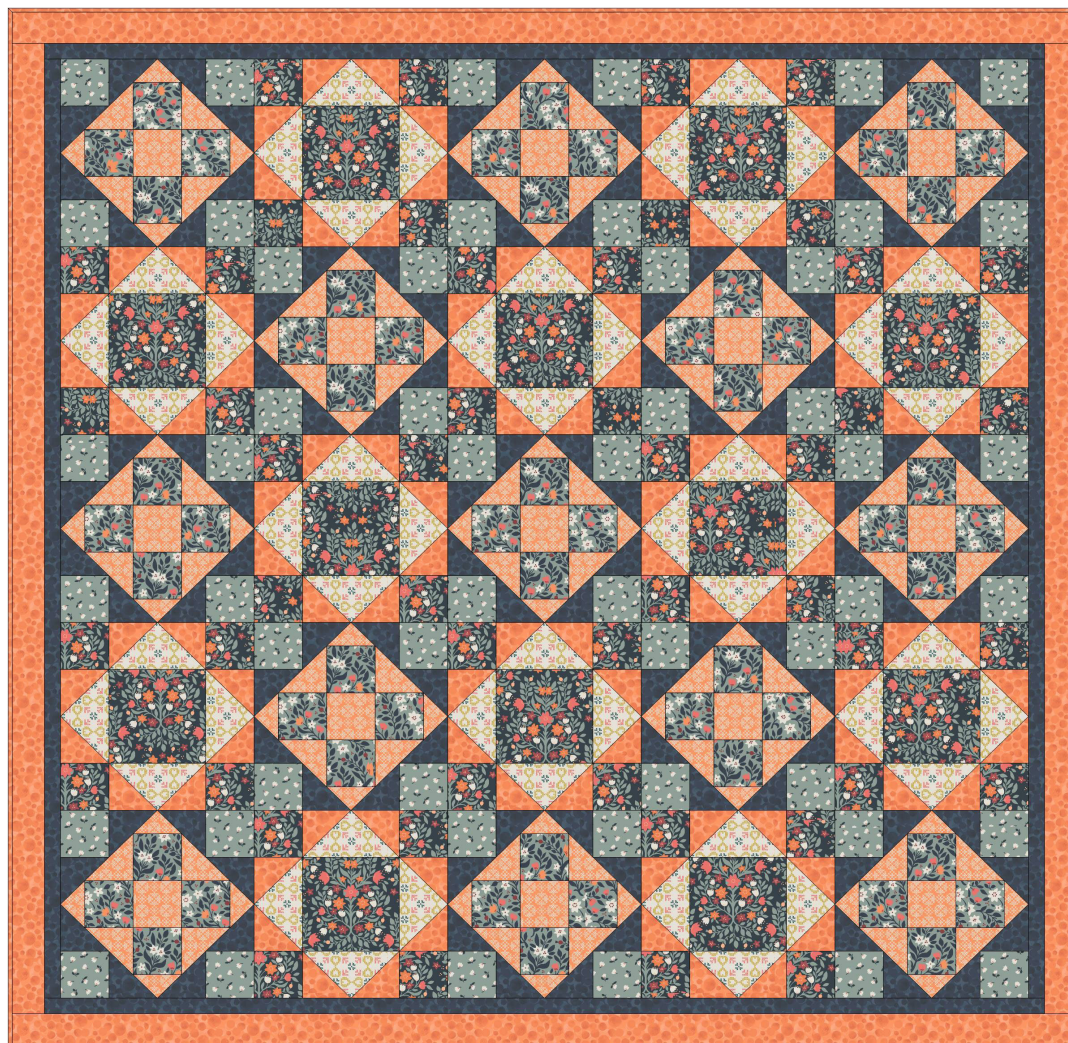
Block 1 layout



Block 2



Block 2 layout



### **Folk Foral Quilt 3**

Designed and made by Sally Ablett

Size of throw 66" x 66" - unfinished block size

12½" x 12½" size

## Requirements

Fabrics from the Folk Floral collection

1. A669.1 - Cross stitch hearts on cream - 5/8yd
2. A668.1 - Cross stitch on autumn orange - 5/8yd
3. A666.3 - Folk floral damask on navy blue - 5/8yd
4. A670.3 - Folk floral all over on iced sage - 7/8yd
5. BB111 - Indigo - 1yd
6. BB309 - Clementine - 1 3/8yd

Wadding and backing 70" x 70"

All measurements include 1/4" seam allowances; press each seam as you go. you will need to join your strips to get the length on the borders.

From fabric 1 cut

52 x 3 1/2" x 3 1/2" (block 1)

From fabric 2 cut

12 x 7 1/4" x 7 1/4" cut in half diagonally twice (block 2)

From fabric 3 cut

13 x 4 1/4" x 4 1/4" cut in half diagonally twice (block 1)

26 x 3 7/8" x 3 7/8" cut in half diagonally once (block 1)

13 x 3 1/2" x 3 1/2" (block 1)

From fabric 4 cut

12 x 6 1/2" x 6 1/2" (block 2)

48 x 3 1/2" x 3 1/2" (block 2)

From fabric 5 cut

52 x 3 1/2" x 3 1/2" (block 1)

From fabric 6 cut

6 x 1 1/2" x WOF inner border

52 x 3 7/8" x 3 7/8" cut in half diagonally once (block 1)

From fabric 7 cut

6 x 2 1/2" x WOF outer border

48 x 3 7/8" x 3 7/8" cut in half diagonally once (block 2)



First 3 rows



### Making up the block

Lay out the fabric piece for block 1 as in diagram. Stitch the center of block together in rows. Starting with a triangle each side of the square and then the small triangle to the top. Next row will have a small triangle each end with the squares in between. As row is the same as top row. Stitch the three rows together to form the center of the block. Sew a triangle to each side of the square as in the diagram. Stitch a triangle to the opposite side to the center, press and then stitch the last two triangles to complete the block. You need to sew 13 in total.

Place your fabric pieces as in block 2 diagram. Sew a small triangle to the short side of the larger triangle. Do this to all four pieces. Stitch in rows to complete the block. You need 12 blocks in total.

### Making up the quilt center.

Place the blocks as in the main diagram. Stitch in rows, pressing each row in the opposite way each time. This will help when you sew your rows together.

### Inner border

Join the fabric strip for each of the borders. 2 x 1½" x 60½" sides.

Sew to each side of the quilt, press back. 2 x 1½" x 62½" top & bottom.

Stitch to the quilt center, press

### Outer border

Join the fabric strip for each of the borders. 2 x 2½" x 62½" sides. Sew to each side of the quilt, press back.

2 x 2½" x 66½" top & bottom. Stitch to the quilt center, press

### Quilting

Sandwich the quilt top, wadding and backing together.

Quilt by hand or machine as desired. Trim the backing and wadding to size of quilt.

### Binding

Use your favorite method from fabric 7 to bind the quilt.



Block 1



Block 1 layout



Block 2



Block 2 layout